

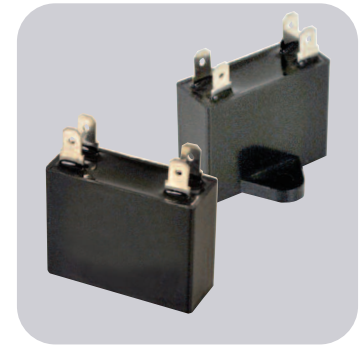
## MARS Mini-Split Run Capacitors

MARS mini-split motor run capacitors are epoxy/resin sealed and widely used as the start-up and/or run capacitor for your motor. They feature very small dissipation factor and inherent temperature rise, high insulation resistance, and stable capacitance.

### Specifications:

- Ambient temperature: 70° C
- Rated voltage: 450 VA
- Capacitance tolerance: ±5
- 50/60 Hz
- Standard: IEC252-2001

MARS NO.	DESCRIPTION	DIMENSIONS		
		H	D	W
12380	1 MFD X 450V	1-1/2	X 1/2	X 1
12381	1.5 MFD X 450V	1-1/2	X 1/2	X 1
12382	2 MFD X 450V	1-1/2	X 1/2	X 1
12383	2.5 MFD X 450V	1-1/2	X 3/4	X 1-1/4
12384	3 MFD X 450V	1-1/2	X 3/4	X 1-1/4
12385	3.5 MFD X 450V	1-7/8	X 3/4	X 1-3/8
12386	4 MFD X 450V	1-7/8	X 3/4	X 1-3/8
12388	5 MFD X 450V	1-7/8	X 7/8	X 1-3/8
12390	6 MFD X 450V	1-7/8	X 1	X 1-1/2



## Accessories For Relays & Capacitors

### QC-6 Kit

**93001** For conversion of screw-type connections on relays

### Resistor for Start Capacitors

**93007** 2 watt (15,000 ohm) Resistors, 10/Pk

### QC-13 for Start Capacitors

**93106** 10 pc 2 watt (15,000 ohm) resistors with .25-in female spade connectors, 10/Pk

### Snap-on Mounting Brackets for Motor Start Capacitors

**93026** 2.75 in  
**93027** 3.38 in  
**93028** 4.38 in  
 Sold in 10 pack

### Start Capacitor Case Dimensions\*

CASE SIZE	DIAMETER	LENGTH
1	1.44	2.75
2	1.44	3.38
4	1.81	3.38
5	1.81	4.38
6	2.06	3.38
7	2.06	4.38
8	2.56	4.38

\*Capacitors may be put in different case sizes occasionally, but will not be larger than those stated.

### Protector (boots) for Motor Run Capacitors

**93011** 1 Hole Boot, 25/Pk

**93012** 2 Hole Boot, 25/Pk

### Wrap-Around Brackets for Motor Run Capacitors

**93014** Oval 1.94 x 2.78 for base A, 10/Pk

**93015** Oval 1.97 x 2.94 for base C, 10/Pk

**93116** Oval 2.25 x 3.66 for base D, 10/Pk

### Mounting Brackets for Round Capacitors

**93031** For 1.63 in and 1.75 in diam  
**93032** For 2.0 in diam  
**93033** For 2.50 in diam  
 Sold in 5 pack

### Bakelite End Caps for Motor Start Capacitors

**93018** BEC-1 1.44 in  
**93019** BEC-2 1.81 in  
**93020** BEC-3 2.06 in  
**93021** BEC-4 2.56 in  
 Sold in 10 pack

For mounting OFF MOTOR. Leads on top side.

**93023** TEC-2 1.81 in  
**93024** TEC-3 2.06 in  
**93025** TEC-4 2.56 in  
 Sold in 10 pack