

Multi-Horsepower Motors / Condenser Fan Motors

Multi-Horsepower Condenser Fan Motors

Ball Bearing

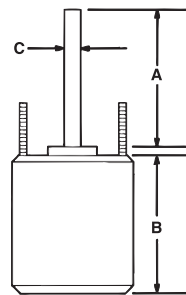
JARD multi-horsepower condenser fan motors are designed for either shaft up or shaft down applications. All motors are suitable for air conditioning or heat pump applications. These motors need to be mounted within the airflow of the fan for proper cooling.

Features:

- Rheem mounting holes w/screws installed
- Thru bolt or band mounting
- Water slinger on shaft
- Air conditioning or heat pump duty

Specifications:

- Class "B" insulation
- Single phase, 60 Hz
- Thermal overload protected
- UL Recognized



Reversible Rotation – Single Speed

| MARS NO. | HP | ROT | RPM/SPEED | VOLTS | ENCL. | BRG. | DIMENSIONS | | | LEAD LENGTHS |
|----------|-----------|-----|-----------|---------|-------|------|------------|------|-----|--------------|
| | | | | | | | A | B | C | |
| 22458 | 1/6 - 1/3 | Rev | 1075 | 208-230 | TEAO | Ball | 6.50 | 3.82 | 1/2 | 36" |
| 22459 | 1/8 - 1/3 | Rev | 825 | 208-230 | TEAO | Ball | 6.50 | 5.48 | 1/2 | 36" |
| 22465 | 1/6 - 1/3 | Rev | 1075/2 | 208-230 | TEAO | Ball | 5.00 | 4.73 | 1/2 | 38" |
| 22468 | 1/8 - 1/2 | Rev | 1075/2 | 208-230 | TEAO | Ball | 5.00 | 5.48 | 1/2 | 38" |
| 22469 | 1/6 - 1/3 | Rev | 825/2 | 208-230 | TEAO | Ball | 5.00 | 5.48 | 1/2 | 42" |

Condenser Fan Motors

Ball Bearing

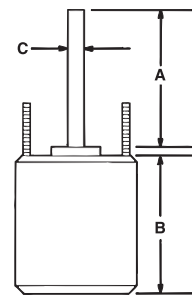
JARD replacement condenser fan motors are designed for residential and light commercial HVAC/R applications suitable for either vertical shaft-up or shaft-down mounting. Shell and end shields are enclosed for weather protection. A weep hole is provided in each end shield to allow condensate to drain.

Features:

- All angle, ball bearing
- Rheem mounting holes w/screws
- Reversible rotation
- Thru bolt or band mounting
- Capacitor requirement noted on motor label
- Up/Down design
- 48" Leads

Specifications:

- Class "B" insulation
- Single phase, 60 Hz
- 70°C, 158°F
- Thermal overload protected
- Fan duty, continuous air over
- UL Recognized



Reversible Rotation – Single Speed

| MARS NO. | HP | VOLTS | AMPS | CAP REQ. | ENCL. | BRG. | DIMENSIONS | | |
|-----------------|-----|---------|------|----------|-------|------|------------|------|-----|
| | | | | | | | A | B | C |
| 1075 RPM | | | | | | | | | |
| 26726 | 1/5 | 208-230 | 0.90 | 5/370 | TEAO | Ball | 6.50 | 4.23 | 1/2 |
| 26727 | 1/6 | 208-230 | 0.90 | 5/370 | TEAO | Ball | 6.50 | 4.23 | 1/2 |
| 26728 | 1/4 | 208-230 | 1.8 | 5/370 | TEAO | Ball | 6.50 | 4.23 | 1/2 |
| 26729 | 1/3 | 208-230 | 2.4 | 7.5/370 | TEAO | Ball | 6.50 | 5.23 | 1/2 |
| 26730 | 1/2 | 208-230 | 3.5 | 10/370 | TEAO | Ball | 6.50 | 5.73 | 1/2 |
| 26731 | 3/4 | 208-230 | 5.2 | 10/370 | TEAO | Ball | 6.50 | 6.23 | 1/2 |

| MARS NO. | HP | VOLTS | AMPS | CAP REQ. | ENCL. | BRG. | DIMENSIONS | | |
|----------------|-----|---------|------|----------|-------|------|------------|------|-----|
| | | | | | | | A | B | C |
| 825 RPM | | | | | | | | | |
| 26403 | 1/6 | 208-230 | 1.0 | 5/370 | TEAO | Ball | 6.50 | 4.23 | 1/2 |
| 26404 | 1/4 | 208-230 | 1.6 | 5/370 | TEAO | Ball | 6.50 | 4.48 | 1/2 |
| 26405 | 1/3 | 208-230 | 1.9 | 7.5/370 | TEAO | Ball | 6.50 | 5.23 | 1/2 |
| 26746 | 1/2 | 208-230 | 2.8 | 12.5/370 | TEAO | Ball | 6.50 | 5.70 | 1/2 |